



Botanica 2

3 July – 27 July

Presented by Godinyamayin Yijard Rivers Arts and Culture Centre

www.gyracc.org.au

Image: Winsome Jobling, *Primordial*, 2011. Two plate mono print drypoint on Thai Sa paper, chine-colle onto blue abaca and cotton backing. Image courtesy of Nomad Art, Darwin.

CHAN CONTEMPORARY
ART SPACE

State Square, Darwin, opposite Parliament House.
Open Tue - Fri 10am - 4pm: weekends 10am - 3pm.
(08) 8924 4042 www.chancontemporaryartspace.org.au



Managed on behalf of
Northern Territory
Government





Wendy Daylight
Bush Tucker and Mangarrayi plants, (from field trips 2010–2012)
 Acrylic on canvas

Botanica 2 showcases work by a selection of emerging and established Northern Territory artists from Darwin, Alice Springs and the wider Katherine region. The exhibition presents the work of Indigenous and non-Indigenous women artists whose imagery focuses on plant forms, native flora and their immediate environment. *Botanica*, in its first iteration, was shown at Godinymayin Yijard Rivers Arts and Culture Centre in April–May 2014. That exhibition featured 19 artists who used a range of materials, including printmaking, painting, watercolour, ceramics and sculpture to investigate the botanical world.

The exhibition took a broad interpretation of the term 'botanical', which usually refers to the close study of plants and flowers. In visual art botanical drawing refers to the art of depicting the form, colour and details of plant species in a descriptive, almost scientific context. Only the work of Ann Hand, a Katherine-based artist, could be truly viewed in this light. The work of the other artists in *Botanica* is not illustrative in any descriptive sense but rather can be seen as using the motifs of plants and flora to reflect the artists' personal concerns and relationships to their environment. Alice Springs-based artist Marina Strocchi's paintings are highly narrative and deploy symbols as a personal language, often filling the entire space with reiterated motifs of plant forms and other imagery. Neridah Stockley's minimally formal and impressionistic renderings of Kurrajong pods, are almost the

opposite of botanical drawings. They convey the artist's interest in plant forms as motifs for expression rather than descriptive observation.

Pip McManus' leaf-etched earthenware hands are individual components of a larger work, *The Poisoned Well*, which was first exhibited in 1999. That work comprised one hundred ceramic hands, which as a whole, acted as a memorial to and record of one hundred twentieth century genocides. In *Botanica* the work is re-imagined as a forest comprising twenty hands. This edited version, serene and formally beautiful, still carries echoes of the ideas behind the original installation – that humans, like a multitude of plant species – exist in an often dangerous and uncertain environment.

Darwin based paper-maker, printmaker and sculptor, Winsome Jobling creates works with a



Pip McManus
a forest, 1999
 ceramic

strong environmental sensibility. Jobling makes the paper she prints on from plant fibres. Her works in *Botanica* are drawn from the exhibition *Mesozoic – The Age of the Cycads* shown at Nomad Art in 2011. Cycads are the world's oldest living seed plants and are often seen as iconic symbols of the Top End landscape. The works here are one-off prints on papers made from plants 'pigmented with bush charcoal and phosphorescent materials, alluding to the effects of fire'.¹



Anna Reynolds
Old Stella Maris – Darwin, 2011
 Digital photograph (1/10)
 Courtesy of Nomad Art, Darwin

Anna Reynolds' digital print, *Old Stella Maris – Darwin*, also presents an iconic Darwin image, where the very fabric of the built environment seems to be overtaken by the rampant fecundity of wet season growth. This work is complemented by Sarah Pirrie's sculptural agglomerations of detritus and plant forms referencing an unseen world in the tidal zone. Other works in *Botanica* are from the *Replant* series, a cross-cultural art project undertaken by Nomad Art, where non-Indigenous artists worked with an ethnobotanist and Indigenous artists from the Daly region, including Patricia Marrfurra McTaggart and Marita Sambono, to make imagery about the plants from the region.

1 <http://www.nomadart.com.au/?m=2011>



Gracie Kumbi
Merrepen, 2014
 Screen print on linen



Marita Sambono
Large Leaf, 2014
 Screen print on cotton drill

These artists, among others, are also represented in *Botanica 2*, which has been augmented by the work of Indigenous artists from the wider Katherine area, including the Roper Gulf and Victoria Daly regions. For Aboriginal people the country itself is the font of social institutions and is viewed as active, alive and intrinsically powerful. Everything has a story including all the plants that people depend on for bush tucker, medicine and the production of implements. Plants can be part of ceremony and law and there is a deep knowledge of their spiritual and practical applications.

Merrepen artists at Nauiyu are renowned for their stylised designs, which have traditional associations to the wetlands, plants and animals of the Daly River region. Many of the magnificent screen-printed fabrics produced by artists from that community represent plants and bush medicine from their region, including those by Gracie Kumbi, and Kieren Karitypul. These fabrics are now prized as wearable art by fashionistas across the country.

Wendy Daylight has produced a magnificent compendium, in over fifty small canvases, of the medicinal and bush tucker plants from the Elosey region. Wendy, who is based at the Jilkminggan community, produced the works as part of a cultural mapping project undertaken by Traditional Owners from the region and the Roper River Land Care Group between 2010–2012.

Botanica 2 also presents the work of two formidable Indigenous artists, Gertie Huddleston (1935–2013) and Lorna Fencer Napurrula (c.1920–2006). Gertie's paintings are representations of country around Ngukurr in the Roper region

and reference plants, country and stories from her life experience and her Mara and Wandarang heritage. Gertie's paintings represent an Aboriginal world view as well as a Christian one. She depicts 'country' along side the productive mission gardens she tended in her youth, as both a 'Garden of Eden' as well as an abundant source of bush tucker and medicine.

Lorna Fencer Napurrula was a Warlpiri woman from Lajamanu, who lived on and off in Katherine, especially in her later years. Her major subject – the dreaming she illustrated over and over again – is the Yam complex: three interrelated



Gertie Huddleston
Painting the Country, 1998
 Synthetic polymer paint on canvas
 Karen Brown Collection



Mandy Edge Tootell ·
Boab, 2011
 Etching and aquatint on map paper



Marina Strocchi
Three Boabs, 2010
 Acrylic on linen

elements of the ecosystem from her country Yumpurpa in the Tanami desert – the bush potato, the pencil yam and the caterpillars that feed on them. She uses strong colour combinations and expressive brushwork to create works that vibrate with energy and power.

Many Aboriginal women also use the *pandanus spiralis* plant to make fibre for weaving baskets, mats and other objects. The roots of other plants are used to make the bush dyes that colour the objects. The exhibition showcases a selection of fibre mats and baskets from Numbulwar in south-east Arnhem Land.

Botanica 2 presents a small snapshot of the work of some of the Northern Territory artists who represent the 'botanical world' in their work. The exhibition displays a diverse cross section of artists with a breadth of styles and perspectives, who explore the theme of plants, flowers and the environment, a compelling theme for many artists in this part of the world.

Cath Bowdler
 Director, GYRACC – June 2014



**Godinymayin
 Yijard Rivers**
 Arts & Culture Centre

Stuart Highway, Katherine East

08 8972 3751

shop@gyracc.org.au

PO Box 613, Katherine NT 0851

www.gyracc.org.au

Proudly sponsored by
**Northern Territory
 Government**





Highway of Lost Hearts

Thursday, 10 July, 7.30pm

A woman. A dog. A campervan. And 4,500km of wide open road.

Presented by Artback NT: Arts Development and Touring, Mary-Anne Butler's one-woman show traverses the Territory from north to the south, exploring themes of love and loss. Written and performed by Mary Anne Butler.

"...the best piece of theatre I've seen in years."
Nicole Beyer, Director, Theatre Network Victoria

Workshops: 8-9 July: Writing Workshops with Mary-Anne Butler. Bookings KRA: development@kathregionarts.org.au or 08 8971 0928



Events

WOW "Thinkin" International Women's Day

Saturday, 8 March, 12.00pm

Join us for lunch to discuss and brainstorm topics and themes for WOW Katherine 2014. Hear two inspirational speakers and be part of the conversation and planning for GYRACC's premier event for 2014.



2014 Northern Territory Sports Awards, Saturday 29 March 2014

This gala event celebrates the Territory's great athletes and teams but also those who go the extra mile behind the scenes to achieve success such as the coaches, volunteers and administrators. Katherine was chosen to host the event because of its rich sporting history producing champions such as Tour de France cycling king, Cadel Evans and current Parramatta Eels player, Luke Kelly.



Above: Mary Anne Butler in *Highway of Lost Hearts*. Photo Brett Boardman.
Front cover: Winsome Jobling, *Primordial*, Two plate mono print drypoint on Thai Sa paper, chine-collé onto blue abaca and cotton backing, (C) 2011. Image courtesy Nomad Art, Darwin.

Stuart Highway, Katherine East

08 8972 3751
shop@gyracc.org.au

PO Box 613, Katherine NT 0851

Opening hours

Tuesday-Friday 10.00am-5.00pm
Saturday 10.00am-3.00pm
Closed public holidays

www.gyracc.org.au



Godinymayin Yijard Rivers Arts & Culture Centre



PROGRAM February – June 2014

Exhibitions



Aly de Groot, *Party Croc*

She's a Pearler: DVAA 30 Year Retrospective

7 February – 1 March
Opening: 7 February, 6–8pm

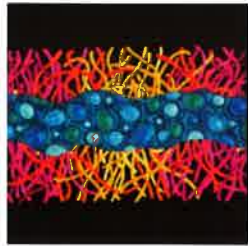
Celebrating 30 years of artmaking from Darwin Visual Arts Association members and workers. The exhibition features some of the Territory's best known artists.



Australia Wide Three

6 March – April 5
Opening: March 7, 6–8pm

A touring exhibition from the Ozquilt Network Inc, featuring a range of beautiful small-scale art quilts. The exhibition will be supplemented by textiles from the Katherine Art Collection and the work of some of Katherine's premier quilters.



Cathy Jack Coupland, *Reef*

Botanica

11 April – 10 May
Opening: 11 April, 6–8pm

Botanica showcases work by a selection of emerging and established artists from Darwin, Alice Springs and the Katherine region. The exhibition presents the work of artists whose imagery focuses on plant forms, native flora and the minutiae of their immediate environment. Curated by Cath Bowdler.

Workshop: May 4th: Botanical Drawing and Painting workshop with Ann Hand. Bookings KRA: development@kathregionarts.org.au or 08 8971 0928.



Marina Strocchi, *The Territory (State 1)*, 2007, lithograph and chine collé



Painting up for Bunggul
Photo: Simon Normand

Mangarrayi Country

16 May – 14 June
Opening: 16 May, 6–8pm

This exhibition is the culmination of cultural mapping work undertaken by Mangarrayi Traditional Owners from the Roper River Catchment. The Elders were keen to develop a cultural map of Elsey Station for passing onto the next generation and to record some of their stories. A joint project through the Roper River Landcare Group and the assistance of Simon Normand it captures the dreamtime stories and collective cultural heritage of Elsey Station.



K space will have its own program running concurrently from February – November 2014.

Performance



Andy Irvine in concert

8 February, 7.30pm
in the Gallery

World famous Irish musician, singer and songwriter presents traditional music for the modern world.

Andy Irvine has been hailed as "a tradition in himself". Andy has been a world music pioneer and an icon for traditional music and musicians. He is recognised as one of the great Irish singers...who gets to the very soul of Ireland.



Djuki Mala

Saturday, 1 March, 7.30pm

Artback NT: Arts Development and Touring presents a show full of excitement for the whole family. Djuki Mala (Chooky Dancers) are touring nationally throughout 2014 with their self titled and long awaited show Djuki Mala.

Hailing from Galiwin'ku Community (Elcho Island) in North East Arnhem Land, dance innovators Djuki Mala have been exploring and re-establishing notions of contemporary Aboriginal performance. Produced and directed by Joshua Bond.

"Energetic, hilarious, groundbreaking" Beat Magazine

Workshop: 1 March: Djuki Mala-Chooky Dancers workshop at St Josephs College 2.30–3.30. Bookings KRA: development@kathregionarts.org.au or 08 8971 0928.



Photo: Geoffrey Dunn

Dust of Uruzgan

Wednesday, 21 May, 7.30pm

Artback NT: Arts Development and Touring presents a musical, multi-media performance by acclaimed musician and songwriter Fred Smith. In 2011 Smith returned from 18 months in Uruzgan Province, southern Afghanistan with a collection of songs he released as the album *Dust of Uruzgan*.

In 2014 the stage show *Dust of Uruzgan* tours Australia wide. The show combines songs, humour and commentary with a stunning set of projected photographs by military and civilian photographers.

